



With a Permanent Collection of over 3,000 objects, PAAM is dedicated to preserving and exhibiting as much work for public consumption as possible. Some pieces, however, come to us in need of costly restorations, which are imperative to completing prior to the work going on view.

Whether due to age, improper storage or display, or worse (like damage from fire or flood), many pieces that have found their way into our collection are in need of some sort of rehabilitation. Some simply need cleaning or framing, while others may need more extensive repairs. We are methodically working through the collection to select pieces that are in need of restoration, in order to preserve them for present and future generations to enjoy.

By donating to the Adopt an Artwork program, you are directly underwriting these restoration efforts. You can choose to donate to the General Restoration Fund, which goes toward restoration of works of PAAM's choosing, or, you can donate the full cost to have a particular piece brought back to its former glory. If you choose to donate the full restorative cost, you will receive before-and-after images once the restoration is complete, and you will be credited on the piece's exhibition label for all future showings. All donations to the Adopt an Artwork program are 100% tax deductible.

This binder shows all the works we currently have available for adoption, their needs, and the cost. For more information, or to donate, please contact PAAM Registrar Seth Abrahamson via [seth@paam.org](mailto:seth@paam.org).



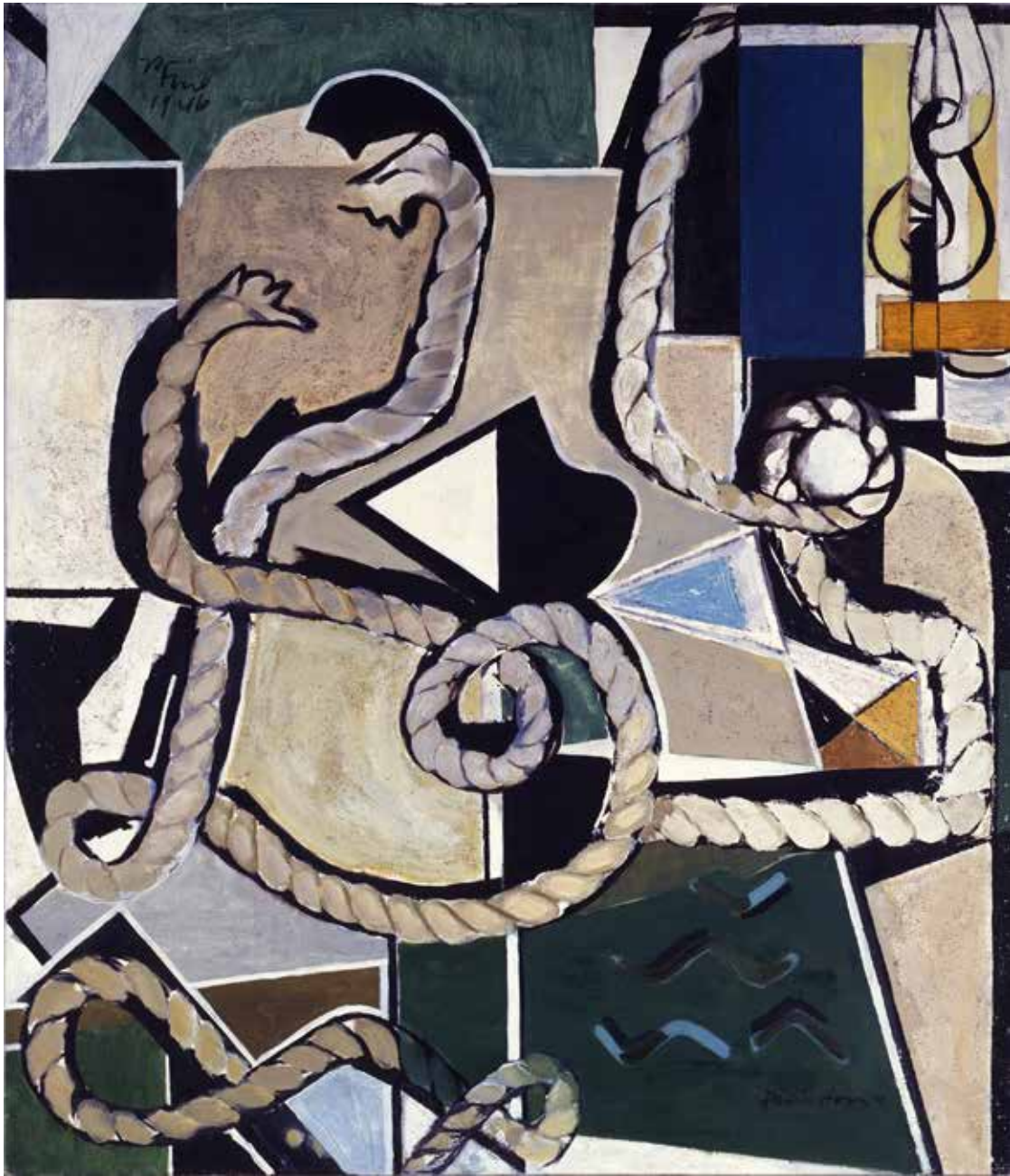
**Henry Botkin** (1896–1983)  
untitled (3 seated figures), 1946  
Oil on panel  
17" x 22.5"  
Gift of Frederick Varaday, 1989

**This piece needs:**

Cleaning, varnishing, new backing, reframing: \$500.00



For more information about the Adopt an Artwork program, or to donate the cost of restoration for a collection work, please contact the PAAM Registrar, Seth Abrahamson, via [seth@paam.org](mailto:seth@paam.org).



**Perle Fine** (1908–1988)

*Nautical Composition/Provincetown*, 1946

Oil on canvas

45.5" x 39"

Gift of Susan C. Larsen, 1998

**This piece needs:**

Reframing: \$250.00



For more information about the Adopt an Artwork program, or to donate the cost of restoration for a collection work, please contact the PAAM Registrar, Seth Abrahamson, via [seth@paam.org](mailto:seth@paam.org).





**Jan Gelb** (1906–1979)

*Hidden Lake*, 1933

Oil on panel

7.5" x 14.5"

**This piece needs:**

Cleaning, repair of flaking, varnishing, reframing: \$300.00



For more information about the Adopt an Artwork program, or to donate the cost of restoration for a collection work, please contact the PAAM Registrar, Seth Abrahamson, via [seth@paam.org](mailto:seth@paam.org).



**Jan Gelb** (1906–1979)  
*Of Driftwood*, 1956  
Oil on canvas  
54" x 42"  
Gift of Lester Gelb, 1979

**This piece needs:**

Cleaning, repair, varnishing, reframing: \$900.00



For more information about the Adopt an Artwork program, or to donate the cost of restoration for a collection work, please contact the PAAM Registrar, Seth Abrahamson, via [seth@paam.org](mailto:seth@paam.org).





**Lawrence Grant** (1886–1930)

*Beach in Tahiti*, 1928

Oil on panel

17" x 21"

Gift from the estate of M.C. Conrad, 1976

**This piece needs:**

Cleaning, varnishing: \$350.00



For more information about the Adopt an Artwork program, or to donate the cost of restoration for a collection work, please contact the PAAM Registrar, Seth Abrahamson, via [seth@paam.org](mailto:seth@paam.org).



**Joseph Lane Hancock** (1864-1922)

*Landscape*, n.d.

Oil on canvas

18" x 23"

Gift of the Barbara C. Murchison Living Trust, 2016

**This piece needs:**

Relining, cleaning, varnishing, new backing: \$1,000.00



For more information about the Adopt an Artwork program, or to donate the cost of restoration for a collection work, please contact the PAAM Registrar, Seth Abrahamson, via [seth@paam.org](mailto:seth@paam.org).





**Budd Hopkins** (1931–2011)

*Libra*, 1974

Silkscreen print, 98/150

24.5" x 33"

Special Purchase Award, 1975

**This piece needs:**

Cleaning and reframing: \$450.00



For more information about the Adopt an Artwork program, or to donate the cost of restoration for a collection work, please contact the PAAM Registrar, Seth Abrahamson, via [seth@paam.org](mailto:seth@paam.org).





**Budd Hopkins** (1931–2011)  
*Sun Black Series (Blue)*, 1970  
Silkscreen print, 37/100  
30" x 22.5"  
Gift from the Richmond Bequest, 1978

**This piece needs:**  
Reframing: \$300.00



For more information about the Adopt an Artwork program, or to donate the cost of restoration for a collection work, please contact the PAAM Registrar, Seth Abrahamson, via [seth@paam.org](mailto:seth@paam.org).



**Charles Anton Kaeselau** (1889–1970)  
untitled (lighthouse and harbor), n.d.  
Oil on canvas, 25" x 30"  
Gift of Frederic B. Blakeman in memory  
of Thomas G. Blakeman, 2013

**This piece needs:**  
Cleaning, reframing: \$500.00



For more information about the Adopt an Artwork program, or to donate the cost of restoration for a collection work, please contact the PAAM Registrar, Seth Abrahamson, via [seth@paam.org](mailto:seth@paam.org).





**Joseph Kaplan** (1900–1980)  
*The Wreck*, n.d.  
Oil on canvas  
8" x 12"  
Gift of Lawrence Richmond, 1975

**This piece needs:**  
Cleaning, reframing: \$350.00



For more information about the Adopt an Artwork program, or to donate the cost of restoration for a collection work, please contact the PAAM Registrar, Seth Abrahamson, via [seth@paam.org](mailto:seth@paam.org).





**Clare Leighton (1898-1988)**

*New England Industries* series (12 pieces), 1952

Wood block prints

10" x 10"

Gifts of Frank and Eleanor Bowers, 2010

**These pieces need:**

Reframing: \$1,750.00



For more information about the Adopt an Artwork program, or to donate the cost of restoration for a collection work, please contact the PAAM Registrar, Seth Abrahamson, via [seth@paam.org](mailto:seth@paam.org).



**Jay Milder** (1934- )

*Broadway, Non-Stop*, c. 1960

Mixed media on canvas

48" x 48"

Gift of the artist, 2013

**This piece needs:**

Framing: \$300.00



For more information about the Adopt an Artwork program, or to donate the cost of restoration for a collection work, please contact the PAAM Registrar, Seth Abrahamson, via [seth@paam.org](mailto:seth@paam.org).





**Elizabeth Paxton (1877-1971)**

*Still Life (the Silver Candelabrum)*, n.d.

Oil on canvas

25" x 30"

Gift of the Barbara C. Murchison Living Trust, 2016

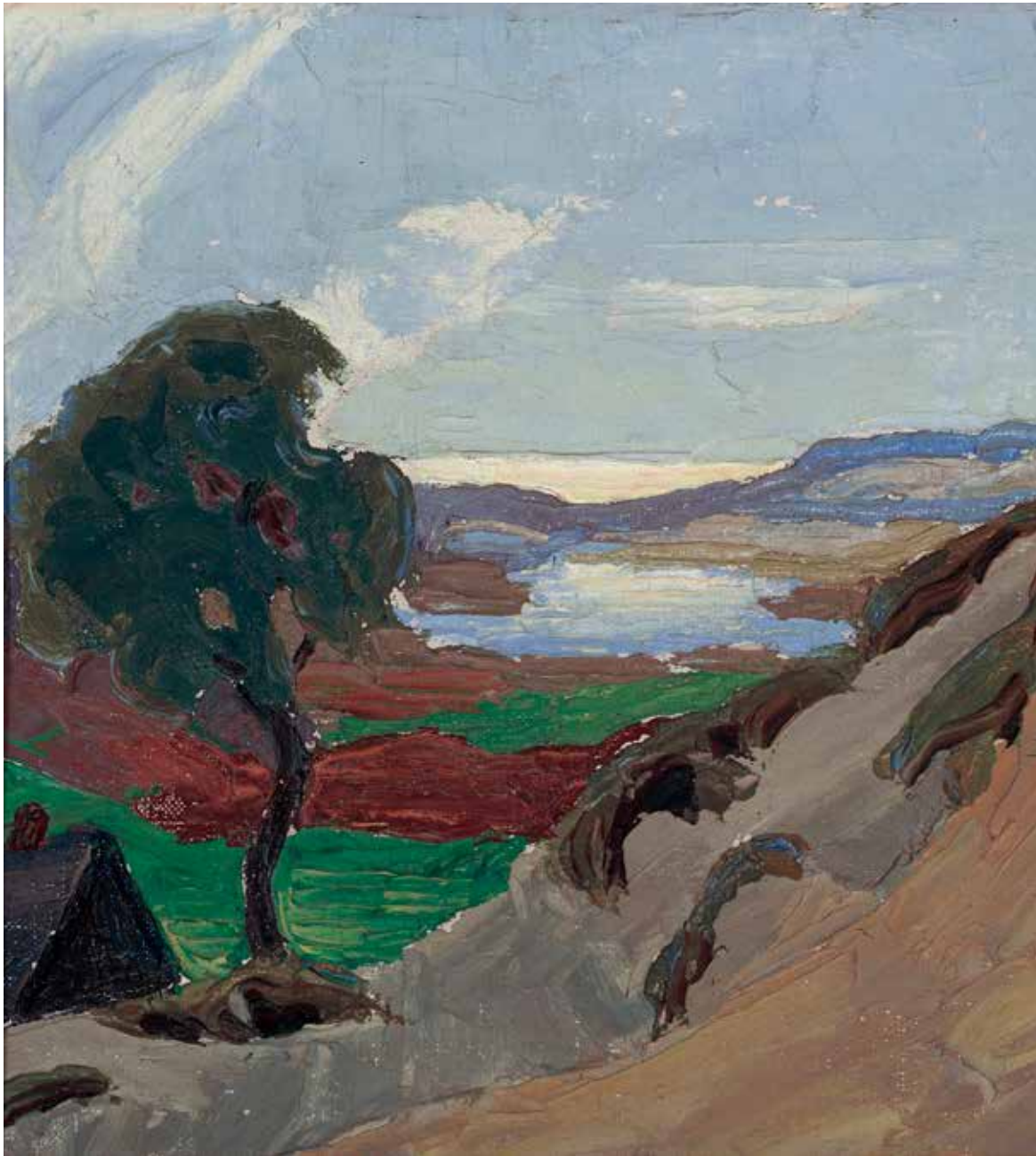
**This piece needs:**

Cleaning, varnishing, new backing: \$300.00



For more information about the Adopt an Artwork program, or to donate the cost of restoration for a collection work, please contact the PAAM Registrar, Seth Abrahamson, via [seth@paam.org](mailto:seth@paam.org).



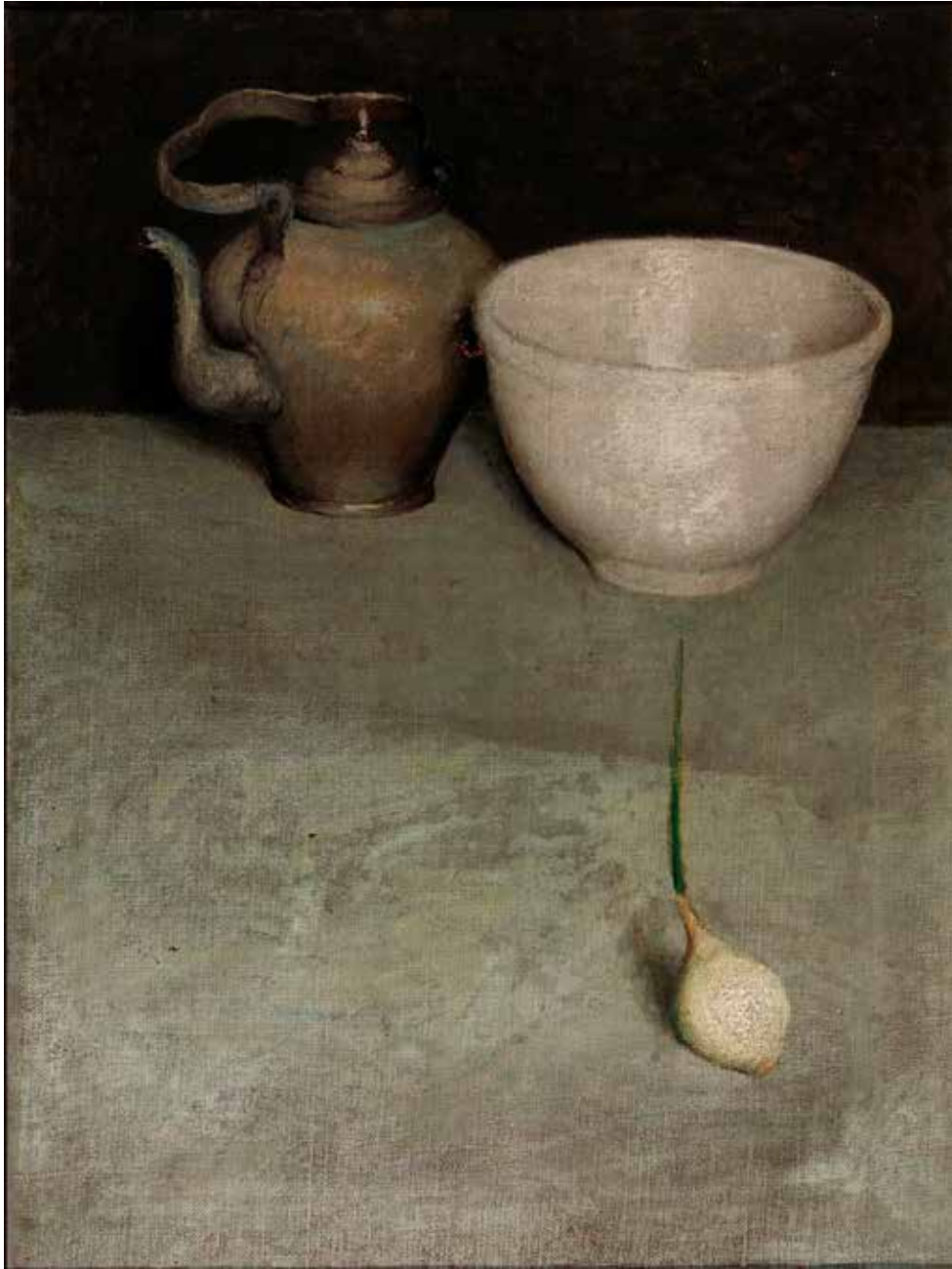


**Heinrich Pfeiffer** (1874–1956)  
*Dunes, Pond and Ocean*, 1925  
Oil on board  
10" x 10"  
Gift of Nat Halper, 1979

**This piece needs:**  
Cleaning, varnishing: \$250.00



For more information about the Adopt an Artwork program, or to donate the cost of restoration for a collection work, please contact the PAAM Registrar, Seth Abrahamson, via [seth@paam.org](mailto:seth@paam.org).



**Attributed to Jack Stuart Rivers** (c. 1896–1986)

untitled (still life with onion), n.d.

Oil on canvas

24" x 18"

Gift from the estate of Ruth Engels, 1994

**This piece needs:**

Cleaning, varnishing, repairs: \$600.00



For more information about the Adopt an Artwork program, or to donate the cost of restoration for a collection work, please contact the PAAM Registrar, Seth Abrahamson, via [seth@paam.org](mailto:seth@paam.org).





**Maurice Sievan** (1898–1981)

*Provincetown Landscape No. 3, n.d.*

Oil on canvas

20" x 24"

Gift of I. David Orr, in memory of Anne Van Schuyler, 1996

**This piece needs:**

Cleaning: \$250.00



For more information about the Adopt an Artwork program, or to donate the cost of restoration for a collection work, please contact the PAAM Registrar, Seth Abrahamson, via [seth@paam.org](mailto:seth@paam.org).





**Frederick Judd Waugh** (1861-1940)  
untitled (waves breaking over rocks), n.d.  
Oil on canvas  
25" x 30"  
Gift of Katherine Sanford, 1994

**This piece needs:**

Cleaning, repair, relining, varnishing, reframing: \$1,500.00



For more information about the Adopt an Artwork program, or to donate the cost of restoration for a collection work, please contact the PAAM Registrar, Seth Abrahamson, via [seth@paam.org](mailto:seth@paam.org).



**E. Ambrose Webster** (1869–1953)

*Village Fountain*, 1921

Oil on canvas

46" x 32"

Gift of Dr. and Mrs. Edward Sleeper, 2002

**This piece needs:**

Framing: \$250.00



For more information about the Adopt an Artwork program, or to donate the cost of restoration for a collection work, please contact the PAAM Registrar, Seth Abrahamson, via [seth@paam.org](mailto:seth@paam.org).