



Detail from *Fat Francis* by Jackson Lambert

THE NAPI AND HELEN VAN DERECK COLLECTION: PART II

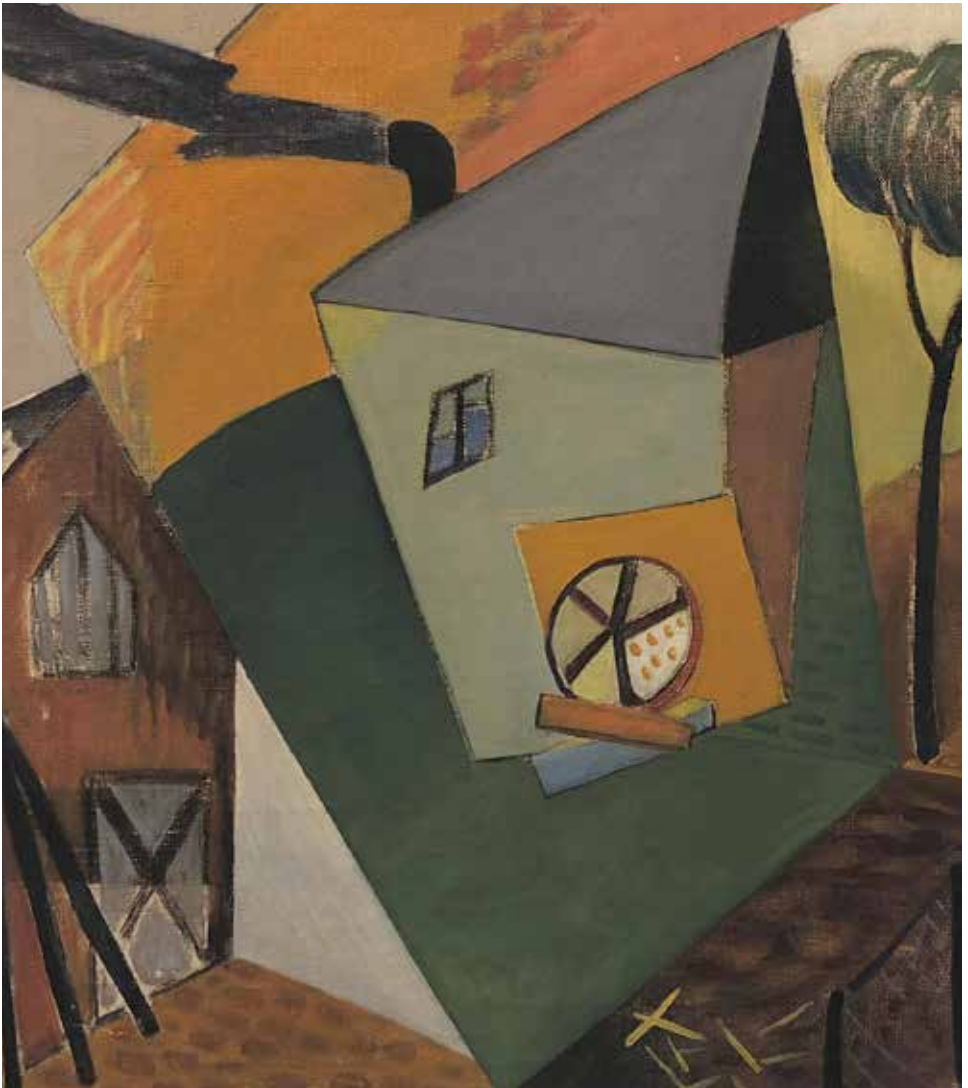
January 22–May 23, 2021

Curated by Christine McCarthy



460 COMMERCIAL STREET | PROVINCETOWN MA | PAAM.ORG | 508.487.1750

VAN DERECK COLLECTION: PART II



Detail from untitled (building) by Anton "Tony" Christian Van Dereck Haunstrup

This exhibition features artworks from the collection of Napi and Helen Van Dereck. Napi passed away on Christmas Day, 2019 and this exhibition is the second installment as we honor his legacy and his keen eye, as well as the depth of this important collection. Every picture has a story—the scenes of Town represent "the way it used to was". Each artwork was carefully selected for a personal reason and he could tell you, in detail, the back story. Some of Provincetown's most iconic vantage

points and important pieces of history are represented by artists such as Gerrit Beneker, Nancy Maybin Ferguson, Blanche Lazzell, Bruce McKain, Ross Moffett, Pauline Palmer, Kathi Smith and George Yater among others. We are so grateful to Helen Van Dereck for allowing PAAM to exhibit this unprecedented collection, and I would personally like to thank Jim Bakker for his assistance in getting this body of work together.

—Christine McCarthy, Curator and CEO, PAAM



Detail from *Commercial Street, Provincetown* by Margery Austen Ryerson

VAN DERECK COLLECTION: PART II



Detail from *Cape Cod, July* by Sam Brecher

Gerrit Beneker (1882–1934)

Wren Tower, 1925

Oil on panel, 16" x 12"

Sam Brecher (1897–1972)

Cape Cod, July, 1943

Oil on canvas, 24" x 32"

Railroad Ticket Office, n.d.

Oil on canvas, 20" x 30"

Billie Miller Da Roza (1913–1988)

untitled (boat on beach), 1949

Oil on canvas, 18" x 22"

Nancy Maybin Ferguson (1872–1967)

East End View, c. 1920s

Oil on panel, 32" x 42"

West End Looking Southwest

from *St. Peter's*, c. 1920s

Oil on panel, 32" x 40"

untitled (*Wren Tower*), c. 1920s

Oil on panel, 10" x 12"

untitled (*North Truro center*), c. 1920s

Oil on panel, 16" x 20"



Detail from untitled (North Truro center) by Nancy Maybin Ferguson

Anton Van Dereck Haunstrup (1902–1943)

untitled (building), n.d.
Oil on canvas, 20" x 24"

Alice Y. Hirsh (1888–1935)
untitled (pier at low tide), 1916
Oil on panel, 10" x 7"

Charles Kaeselau (1882–1972)
The Reckoning, n.d.
Oil on canvas, 30" x 36"

Jackson Lambert (1919–2011)
Fat Francis, 1968
Oil on panel, 36" x 23"

Bruce McKain (1900–1990)

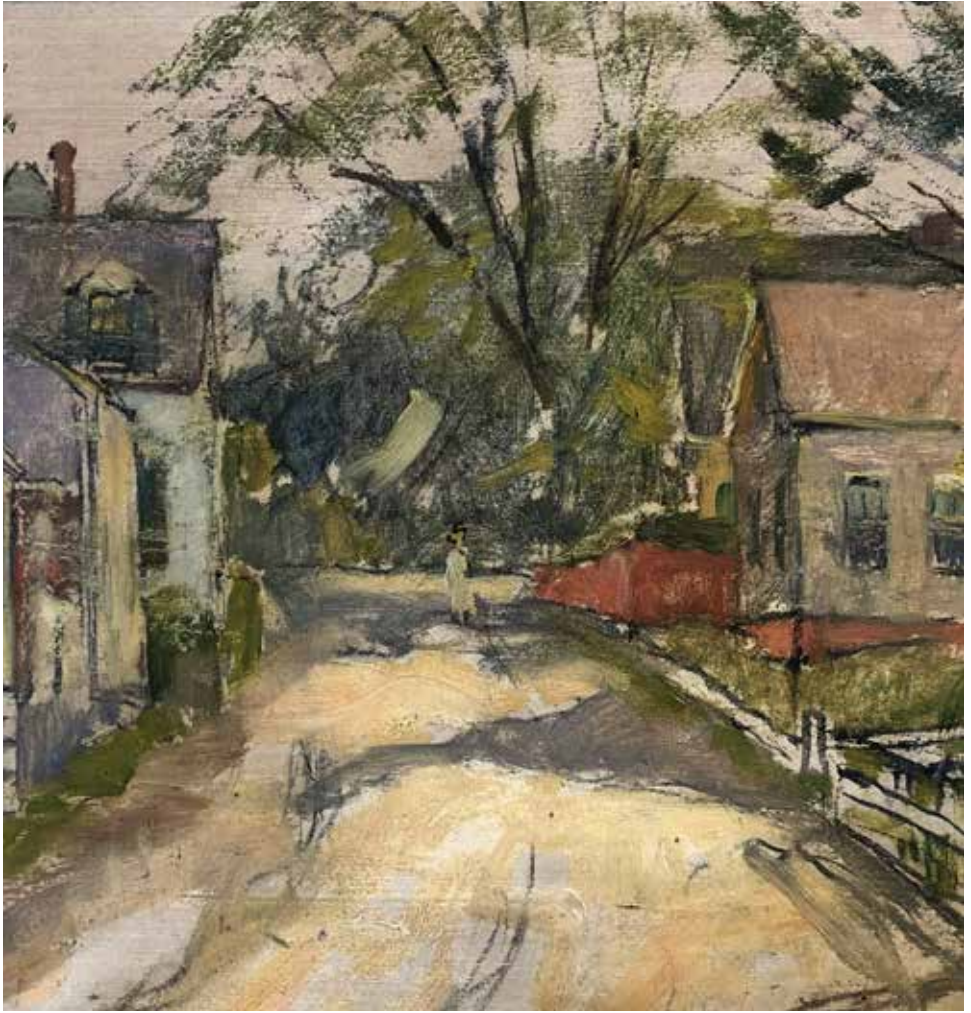
Fishermen, 1940
Oil on panel, 25" x 30"

Approaching Storm, n.d.
Oil on canvas, 30" x 36"

Frank Milby (b. 1933)
untitled (Provincetown
seen from harbor), n.d.
Oil on canvas, 24" x 48"

Richard E. Miller (1875–1943)
untitled (horses on beach), n.d.
Oil on panel, 24" x 30"

VAN DERECK COLLECTION: PART II



Detail from *Provincetown, Chip Hill* by Pauline Palmer

Ross Moffett (1888–1971)

Drying the Nets, n.d.

Oil on canvas, 32" x 52"

untitled (six figures in street), n.d.

Oil on canvas, 24" x 34"

George Oberteuffer (1878–1940)

On the Beach, Provincetown, n.d.

Oil on canvas, 25" x 30"

Pauline Palmer (1867–1938)

Provincetown, Chip Hill, n.d.

Oil on panel, 11.5" x 15.5"

Street Scene, Provincetown, n.d.

Oil on canvas, 16" x 20"

Robert Bruce "R.B." Rogers (1907–1981)

untitled (sailing dory), 1935

Oil on panel, 12" x 10"

Margery Austen Ryerson (1886–1989)

Commercial Street, Provincetown, 1911

Oil on panel, 12" x 15"

Caleb Arnold Slade (1882–1961)

Red House in Winter, n.d.

Oil on canvas, 24" x 29"



Detail from *Webster House* by Kenneth Stubbs

Kathryn Lee Smith (b. 1953)
Low Tide, Captain Jack's No. 2, 2001
White-line wood block print, 14" x 17"

Kenneth Stubbs (1907–1967)
My Studio in Provincetown, 1935
Watercolor on paper, 10" x 13.75"

Webster House, 1948
Watercolor on paper, 15" x 11.25"

Harold Aiken Vincent (1864–1931)
Provincetown, n.d.
Oil on canvas, 30.5" x 36.5"

Frederick Judd Waugh (1861–1940)
Bradford Street, n.d.
Oil on panel, 30" x 36"

John Whorf (1903–1959)
untitled (ship at sea), n.d.
Oil on canvas, 24" x 30"

George Yater (1910–1993)
Afternoon Freight, 1935
Watercolor on paper, 13" x 18.25"
Drifting Ice at Sklaroff's Wharf, n.d.
Watercolor on paper, 20" x 27"

PROVINCETOWN ART ASSOCIATION AND MUSEUM



A nationally recognized, year-round cultural institution, PAAM fuses the creative energy of America's oldest active art colony with the natural beauty of outer Cape Cod that has inspired artists for generations.

ADMISSION + HOURS

General admission: \$12.50

Free for PAAM members and those under 16

Days and times are subject to change. Please visit us at paam.org/tickets or call 508-487-1750 for our current hours and ticket availability.



This project was supported in part by the Massachusetts Cultural Council, which receives support from the State of Massachusetts and the National Endowment for the Arts.

PAAM is an equal opportunity employer and provider.