

Detail from *Me and My Mother, Dead in Bed* by Patricia Suarez

THE SAME FOUR WALLS

**INTIMATE INTERIORS FROM
THE PERMANENT COLLECTION**

October 22, 2021–January 23, 2022

Curated by Lesley Marchessault



460 COMMERCIAL STREET | PROVINCETOWN MA | PAAM.ORG | 508.487.1750

THE SAME FOUR WALLS



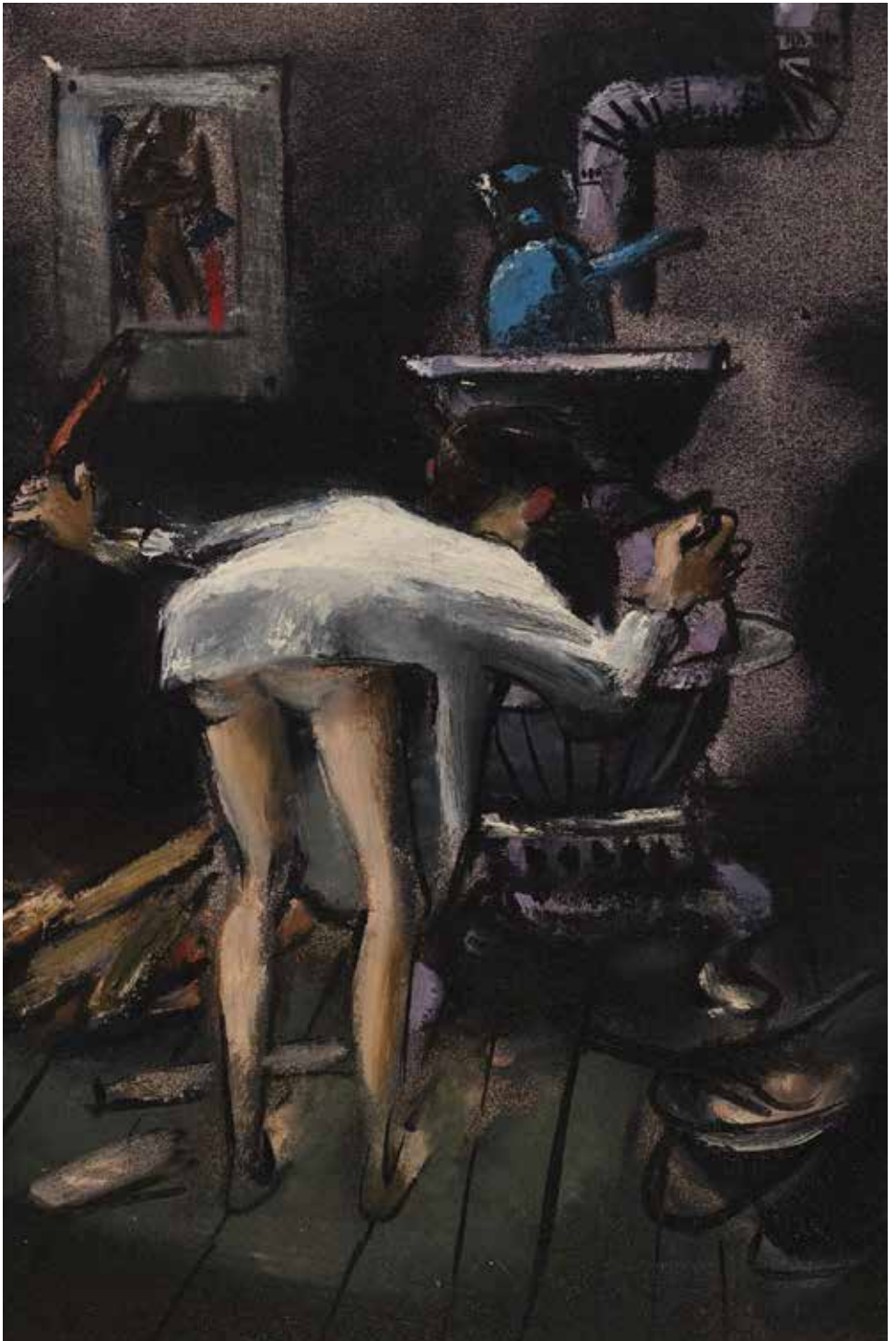
Detail from untitled (still life) by Kenneth Stubbs

The past 20 months have given us time and desire to examine our private spaces, reorganize, declutter, clutter, and declutter again. The walls that surround us became the vistas we peered at every day. In some ways, our familiar items became catalysts for creativity, and in other ways, they inspired big changes. This exhibition seeks to explore the interior as both subject and muse. Artists capture their surroundings in various ways—how does the space we inhabit inspire us? Some works in this exhibition present the artists' space lovingly constructed. Others are an expression of solitude, be that lonely or triumphant. Still others

analyze the activities we perform when faced with isolation—the tiny detailed template for a color print, or the painstaking act of painting a human face in order to then photograph it.

As you walk through, allow yourself to reflect upon the changes you've made on or within your four walls. What does the space you inhabit say about you? What does it convey to you? How do you feel in it? How have those feelings changed, eroded, or intensified over the past 20 months?

—Lesley Marchessault
Chief Development Officer at PAAM



Detail from *Lumberyard Studio in Winter* by Charles Darby

THE SAME FOUR WALLS



Detail from *Listening to Ronnie's Arteries Hardening* by Susan Baker

Amy Arbus (b. 1954)
Nina/After Jeanne, 2012
C-print photograph, 40" x 30"
Gift of the artist, 2015

Susan Baker (b. 1946)
*Listening to Ronnie's
Arteries Hardening*, c. 1990s
Acrylic on foam board, 18" x 18"
Gift of Judith Trepp, 2013

Will Barnett (1911–2012)
Introspection, c. 1972
Color serigraph, 29.5" x 35"
Gift of Dr. and Mrs.
Henry Fogelman, 2002
Reflection, c. 1972
Color serigraph, 22" x 14.5"
Gift of Dr. and Mrs.
Henry Fogelman, 2002

Heather Blume (b. 1950)
Artist's Block, 2002
Bronze, 9.5" x 9" x 3"
Gift of the artist, 2012

Michael Carroll (b. 1959)
Provincetown Interior (Zen), 1997
Oil on paper, 6.75" x 5"
Gift of Robyn S. Watson, 1998

Dorothy E. Cook (1909–2000)
Still Life, n.d.
Oil on board, 14" x 17"
Gift of the artist, 2000

Michael Costello (b. 1954)
*Buoy with Green Door
and Wooden Stool*, 1996
Oil on panel, 17.75" x 11.5"
Anonymous gift, 2019



Detail from *Antique Books* by Rachel Ellis Kaufman

Jay Critchley (b. 1947)

Shoes and Towel on a Hook, 1982

Mixed media, 24" x 13" x 7"

Gift of the artist, 1988

Charles Darby (1908–1944)

Lumberyard Studio in Winter, n.d.

Oil on canvas, 20" x 24"

Gift of Bruce McKain

Jennifer Ditacchio (b. 1969)

Out, 1993

Encaustic on board, 14" x 13"

Gift of the artist, 1994

Carolyn Evans (b. 1947)

Dog in the House, 1982-83

Bronze, marble base, 24" x 34" x 28.5"

Gift of the artist, 2011

Elsbeth Halvorsen (1929–2019)

Sanctuary, 1992

Mixed media, 6" x 3" x 2.5"

Gift of Gay Dickerson, 1996

Khristine Hopkins (b. 1950)

Easter Week: Still Life with

Cimabue and Narcissus, n.d.

Hand-colored photograph, 7" x 5"

Gift of the artist in memory

of Don Sterton, 1987

Rachel Ellis Kaufman (1913–2001)

Antique Books, n.d.

Oil on canvas, 22.25" x 18"

Gift of Heather Blume, 2012

Blanche Lazzell (1878–1956)

The Vacant Chair, 1948

Charcoal on paper, 14" x 12"

Gift of Martin and

Harriette Diamond, 2001

Julie Levesque (b. 1958)

Tipped Chair (What Remains), 2002

Salt on vellum, 30" x 23"

Gift of the artist, 2002

THE SAME FOUR WALLS



Detail from *A Sense of Balance* by Nick Patten

Robena Malicoat (b. 1961)
*What Happens When You
Leave The Door Open?*, 1998
Watercolor on board, 14.25" x 32.25"
Gift of David Davis, 2006

Cynthia Packard (b. 1958)
Black Bowl, 2012
Mixed media on panel, 40" x 30"
Gift of the artist, 2018

Pauline Palmer (1869–1938)
untitled (the artist's studio), n.d.
Oil on canvas, 20" x 16"
Gift from the estate of
Ruth Hiebert, 2004

Nick Patten (b. 1953)
A Sense of Balance, c. 2009
Oil on panel, 36" x 40"
Gift of Doug Levy, 2016

Judith Shahn (1929–2009)
Citrus Juicer, 1982
Serigraph, 7.5" x 7.5"

Measuring Cup, 1982
Serigraph, 7.5" x 7.5"

Mortar and Pestle, 1982
Serigraph, 7.5" x 7.5"

From the *Kitchen Utensils* series
Gift from the estate of
Judith Shahn Dugan, 2011

Mary Shaier (1905–1971)
untitled (figure reading), 1966
Sepia ink wash on paper, 11" x 14"
Gift of Lillian Orłowski, 1989

Kenneth Stubbs (1907–1967)
untitled (still life), n.d.
Casein on board, 10" x 16"
Gift of Miriam Stubbs, 1994



Detail from untitled (still life) by Vaclav Vytlacil

Mary Sinclair (1914–2004)

Kitchen with Clothesline, c. 1950s

Oil on canvas, 28" x 24.5"

Gift of the Barnett-Epstein Estate, 2018

Room in Danbury, 1949

Oil on canvas, 26" x 36"

Gift of the Barnett-Epstein Estate, 2018

Patricia Suarez (b. 1974)

Me and My Mother, Dead in Bed, 2005

Silver gelatin print, 2/7, 16" x 19"

Gift of Stephen Desroches, 2016

Vaclav Vytlacil (1892–1984)

untitled (still life), 1940

Gouache on paper, 14" x 18"

Gift of Howard Buhse, Joan Bose
and Deborah Plonski, 1997

Ferol Sibley Warthen (1890–1986)

Ornaments (first state), 1953

Color wood block print, 5" x 4"

Ornaments (preliminary drawing), 1953

Pen and ink on paper, 5" x 4"

Ornaments (preliminary drawing), 1953

Color wood block print, 5" x 4"

Ornaments (final state), 1953

Color wood block print, 5" x 4"

Block for *Ornaments*, 1953

Wood printing block, 6" x 6" x 2"

Gifts of Mr. and Mrs. Jay and

Sibyl (Warthen) Smith, 2006

Helen Miranda Wilson (b. 1948)

Blond Potato, 1977

Oil on board, 9.5" x 9.25"

Gift of Sally Nerber, 2002

PROVINCETOWN ART ASSOCIATION AND MUSEUM



A nationally recognized, year-round cultural institution, PAAM fuses the creative energy of America's oldest active art colony with the natural beauty of outer Cape Cod that has inspired artists for generations.

ADMISSION + HOURS

General admission: \$12.50

Free for PAAM members and those under 16

Days and times are subject to change. Please visit us at paam.org or call 508-487-1750 for our current hours and ticket availability.

  @PAAM1914



Mass
Cultural
Council



**National
Endowment
for the Arts**
arts.gov

This project was supported in part by the Massachusetts Cultural Council, which receives support from the State of Massachusetts and the National Endowment for the Arts.

PAAM is an equal opportunity employer and provider.